

Active2Public Transport

Better combining cycling, walking and public transport in the Danube Region

EU-Interreg Danube Region project

Irene Bittner

Österreichische Energieagentur – Austrian Energy Agency

Vienna – February 4th, 2026



Agenda

- **13:30 | Welcome & Input on ‘Active2Public Transport’ (A2PT)** by Irene Bittner, Austrian Energy Agency, AEA
- **14:00 | klimaaktiv mobil: Mobility governance in Austria for cities, regions and municipalities & SUMP**s by Eva Mastny, Federal Ministry of Innovation, Mobility and Infrastructure (BMIMI)
- **14:30 | Exchange** with Eva Mastny and Irene Bittner
- **15:00 | Coffee break** (approx. 15:00-15:30)
- **15:30 | Workshop** Education and good practice examples – ToolBox and transfer to the Czech context
- **16:30 | Communication, Trade Fairs, and Long-term Cooperation**

Austrian Energy Agency

Interreg
Danube Region



Co-funded by
the European Union

Active2Public Transport

Consulting, capacity building and training

- **Focus:** Energy policy and economic decisions and their implications
- Austria | EU | International



Program management



National energy efficiency monitoring body

monitoringstelle
energieeffizienz*

*Monitoring body energy efficiency

This project is supported by the Interreg Danube Region Programme co-funded by the European Union

We provide solutions for the future of energy.

Active2Public Transport

Project Description

2,856,023.50 €	2,284,818.80 €	1/2024-6/2026
Project Budget	Interreg Funds	Project duration

EU-Interreg Danube Region Project

interreg-danube.eu/projects/active2public-transport

2024 January – 2026 June (30 months)

- 2024 Analysis
- 2025 Pilote activities in 9 regions
- 2026 A2PT Action Plan & A2PT Online Toolbox
- **2026 Final Conference & Public event (Ljubljana, SI)**

Interreg
Danube Region



Co-funded by
the European Union

Active2Public Transport



Active2Public Transport

Project Partnership

11 Project Partners from 9 countries (PP)

23 Associated, Strategic Partners (ASP)

- Ministries
- Mobility / Energy Agencies
- Public Transport Providers
- Research Organisations

Interreg
Danube Region



Co-funded by
the European Union

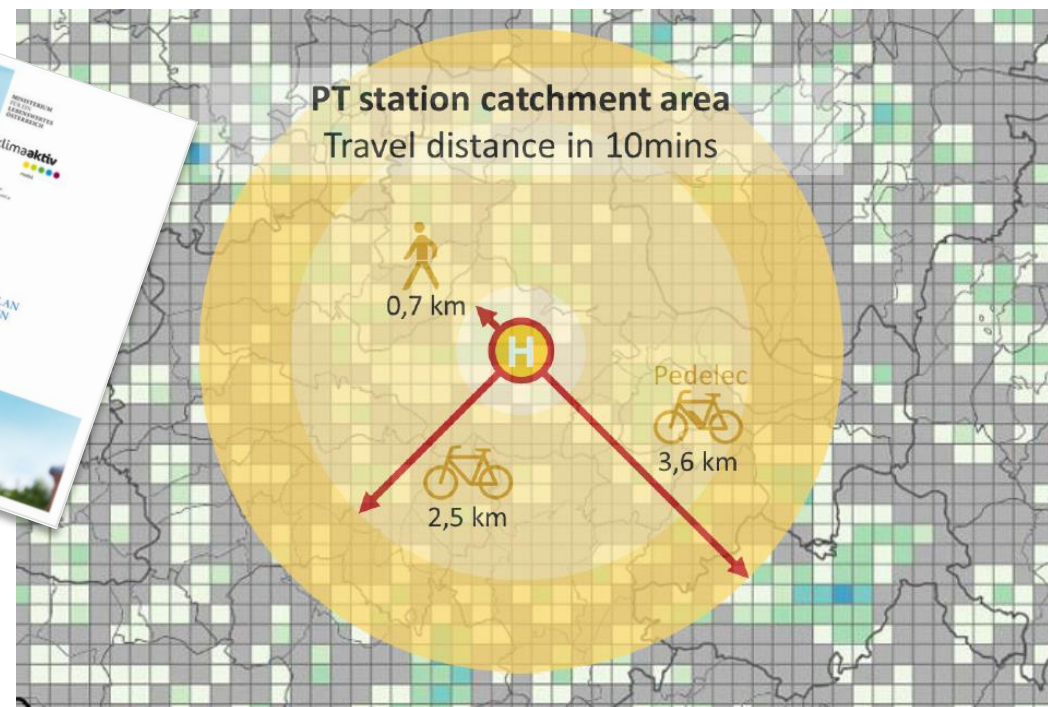
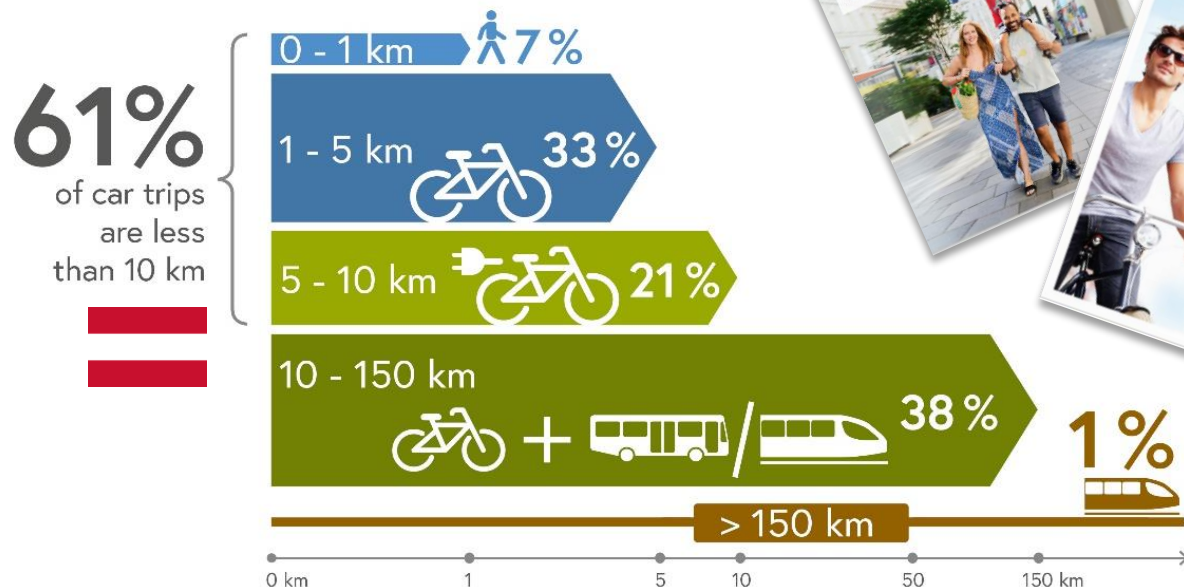
Active2Public Transport

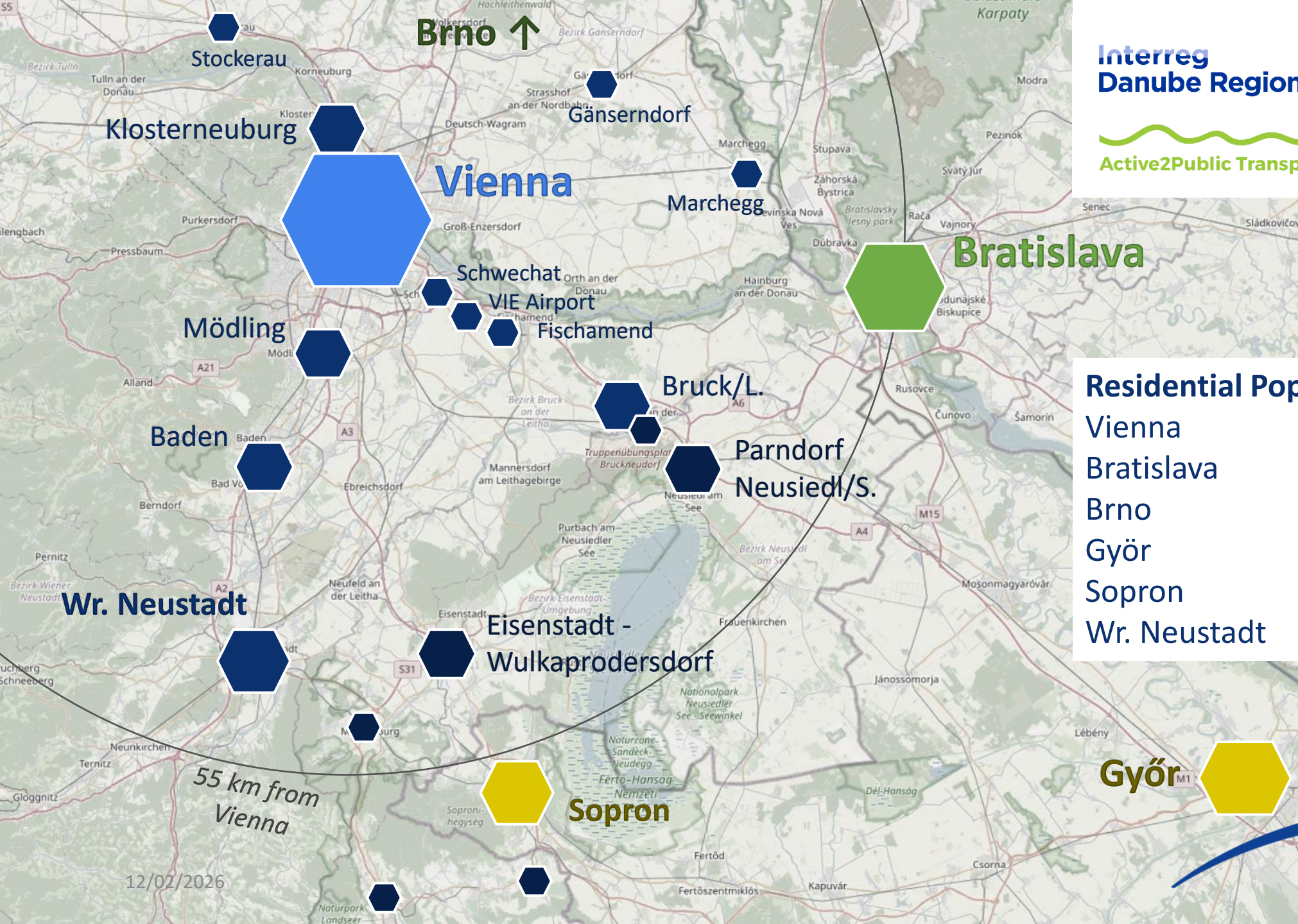
2 Partner	4 ASPs
Lead Partner – AEA Austrian Energy Agency	- BMK – II/6 – Ministry of Climate Action - ÖBB – Austrian Railways
Projektpartner – BGL Mobility Agency Burgenland	- Regional Authority Burgenland - Public Transport Association Burgenland



Active2Public Transport

Travel distances





Interreg
Danube Region



Co-funded by
the European Union

Active2Public Transport

Residential Population (2024)

Vienna	2.000.000
Bratislava	450.000
Brno	380.000
Győr	130.000
Sopron	62.000
Wr. Neustadt	40.000

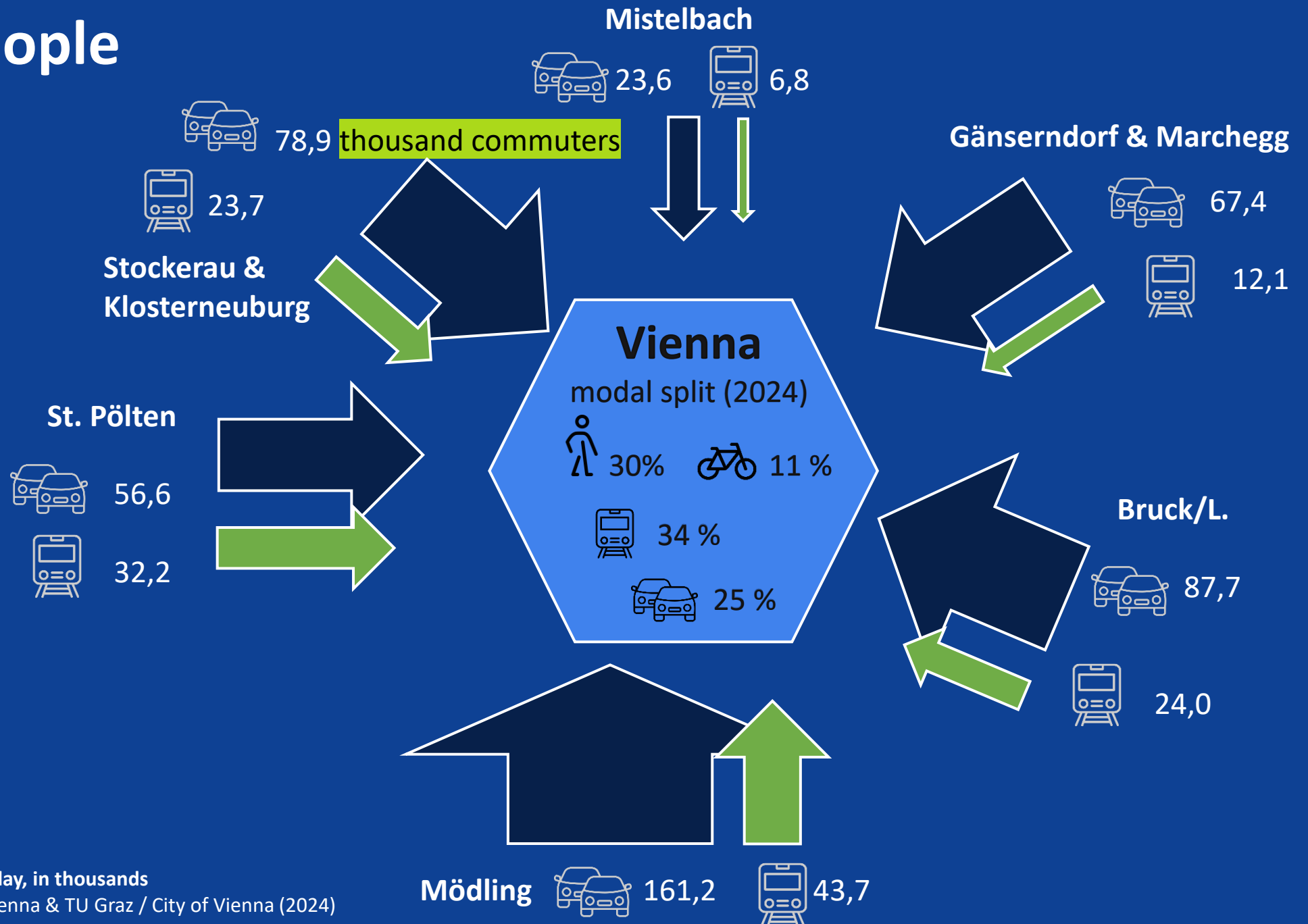
Cycling is booming – View on Vienna



- In 2023, almost **12 million cyclists** counted in Vienna!
- Compared to the year 2018 – increase of 47%!
- Compared to the year 2022 – increase of 3%!
- First time, 10% of Vienna's Modal-Split!

Source: Mobilitätsagentur Wien, 2024 (Mobility Agency Vienna) /
Article in English [here at the platform 'Cycle Competence Austria'](#)

617.000 people commuting to Vienna on work days



Analysis and Pilote Activities

Testing Innovative Solutions

Mobility Transformation – Study Visits Burgenland & Vienna 2024

Interreg
Danube Region



Co-funded by
the European Union

Active2Public Transport



Regional High Speed Cycling Connection
© Mobilitätszentrale Burgenland @ instagram



Safe Bike Parking Boxes Station Wulkaprodersdorf
© Jitka Vrtalova (PUM)



Shared space to support cycling, walking and public transport, Neubaugasse / Mariahilfer Str. - Vienna
© Andrea Leindl (AEA)

**Interreg
Danube Euroregion**

**Co-funded by
the European Union**

A photograph of three people standing outdoors on a paved path. On the left, a young man with dark hair and a beard, wearing a purple t-shirt and dark pants, holds a smartphone. In the center, an older man with grey hair and glasses, wearing a light blue button-down shirt and dark pants, looks at the phone. On the right, a woman with grey hair, wearing a blue t-shirt and black shorts, also looks at the phone. She has a pink backpack. In the background, there is a blue banner with white text that reads "Mravský". The scene is set against a backdrop of green trees and a clear sky. A large yellow semi-circle is visible on the right side of the image.

Results from SWOT-Analysis

Strength

- Increasing investments in bicycle- and pedestrian-friendly infrastructure as well as improved accessibility to public transport stations.
- Growing awareness of multimodal transport solutions.
- Progress in the provision of digital travel information.

Weakness *(Focus on: Walking and PT)*

- Limited accessibility / outdated infrastructure.
- Missing curb ramps at intersections, unsafe pedestrian crossings.
- Obstructions on sidewalks, conflict areas with other road users.
- Insufficient signage.



Pilot actions

BGL	MOP	MOP	BGL	GYS	BID	DCC
A2PT Testing schemes	Street transformation	Testing bike boxes combined with attractive ticketing	Mobility lab for testing bike carriage solutions for regional buses	Demonstrate the effectiveness of hike+bike+rail services	Testing new integrated tickets for A2PT	Integration of improved information in A2PT in existing apps/tools
BGL, BID, DOU, PUM, VNC	MOP, BGL	MOP, MMP, DCC, VNC	BGL, BID, MMP	GYS, BGL, KTI	BID, GYS	DCC, PUM, CNV, GYS



Pilot: Street transformation

Interreg
Danube Region

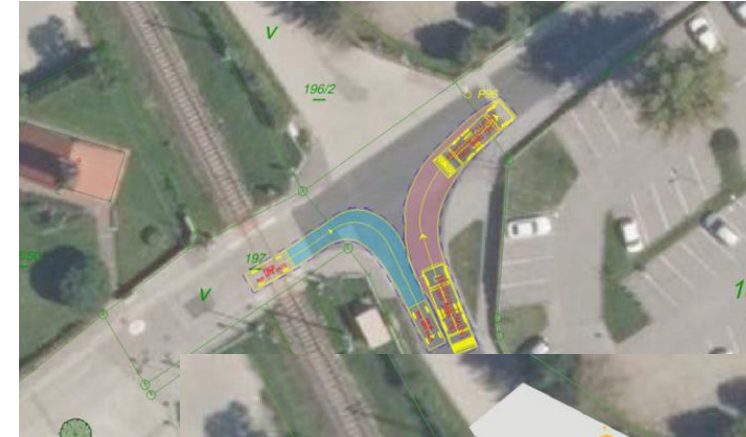


Co-funded by
the European Union

Active2Public Transport



Gestaltungsvorschlag Knoten Dr.Karl-Renner-Str.-Landegger Str. (Verkehrsingenieure)



Gestaltungsvorschlag Knoten Linke Bahngasse-Landegger Str. (Verkehrsingenieure)

20/02/2025

This project is supported by the Interreg Danube Region Programme co-funded by the European Union

Pilot: Testing Schemes

“Give your car a break”

Joint implementation

in Bratislava, Bukarest,
Burgenland, Olomouc & Ulm:

Test persons...

- ✓ get a free ticket for public transport and a bike, folding bike or e-bike
- ✓ commute without their car for 30 days / 4 weeks
- ✓ Call for test: Feb/March 2025
Test phase: April/June 2025

➤ **Ongoing: evaluation report**

**Zukunftspendlerinnen
starten in die Testphase!**

Interreg Danube Region Co-funded by the European Union burgenland mobilität

This project is supported by the Interreg Danube Region Programme co-funded by the European Union.

Interreg
Danube Region



Co-funded by
the European Union

Active2Public Transport

Bratislavská integrovaná doprava, a.s.
181 Followerinnen
3 Wochen •

Doprajte svojmu autu oddych a objavte nový spôsob cestovania

Predstavte si 4 týždne bez tankovania, bez hľadania parkovacieho miesta a ... mehr

Übersetzung anzeigen

Doprajte svojmu autu oddych!

Staňte sa účastníkom našej výzvy!

Koho hľadáme?
Hľadáme záujemcov z Bratislavského kraja do našej výzvy, ktorí budú štyri týždne dochádzať do práce **kombináciou verejnej dopravy a aktívnej mobility** (bicykel, chôdza). Je tiež možné pracovať z domu max. 2 dni v týždni.

Čo ponúkame?
Bezplatnú električku a bicykel počas celého obdobia našej výzvy.

Máte záujem?
Naskenujte QR kód, vyplňte dotazník a podporte nás v implementácii projektu Active2Public Transport programu Interreg Danube Region.

Prihláste sa teraz a pridajte sa k našej výzve!

Bratislavská integrovaná doprava, a.s. e-mail: a2pt@bid.sk

A2PT Online-Toolbox

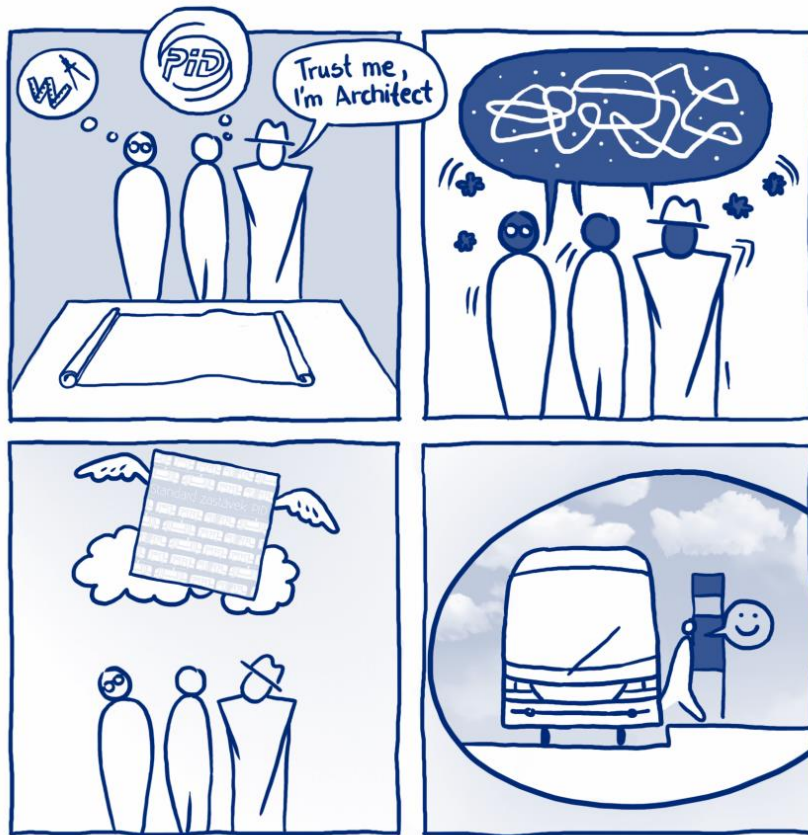
klimaaktivmobil.at

Interreg
Danube Region



Co-funded by
the European Union

Active2Public Transport



Active2Public Transport

EU Interreg Danube Region project to better combine cycling, walking and public transport

About A2PT →

Good Practice →

Pilot Activities →

Fields of action

The Active2Public Transport (A2PT) partnership identifies nine fields of action to better connect active mobility with public transport. These action fields are based on European and global good practices, pilot activities, and study visits.



Bike parking and sharing at stations

Sufficient bike parking and sharing options at public transport hubs help to create seamless connections between cycling and public transport. Learn more. →



Ticketing and fares

Providing fair and attractive pricing is essential to make sustainable mobility more appealing. Integrated ticketing or flexible fare systems make sustainable travel easier, more affordable and more convenient. →

Contact

Interreg
Danube Region



Co-funded by
the European Union



Dipl.-Ing. Dr. Irene Bittner | irene.bittner@energyagency.at

Österreichische Energieagentur – Austrian Energy Agency (AEA)

Active2Public Transport – Interreg Danube Region

Further web links

- Federal Ministry of Innovation, Mobility and Infrastructure (BMIMI)
- klimaaktiv mobil
- Mobilitätszentrale Burgenland

 Federal Ministry
Innovation, Mobility
and Infrastructure
Republic of Austria

klimaaktiv

mobil


Mobilitätszentrale Burgenland